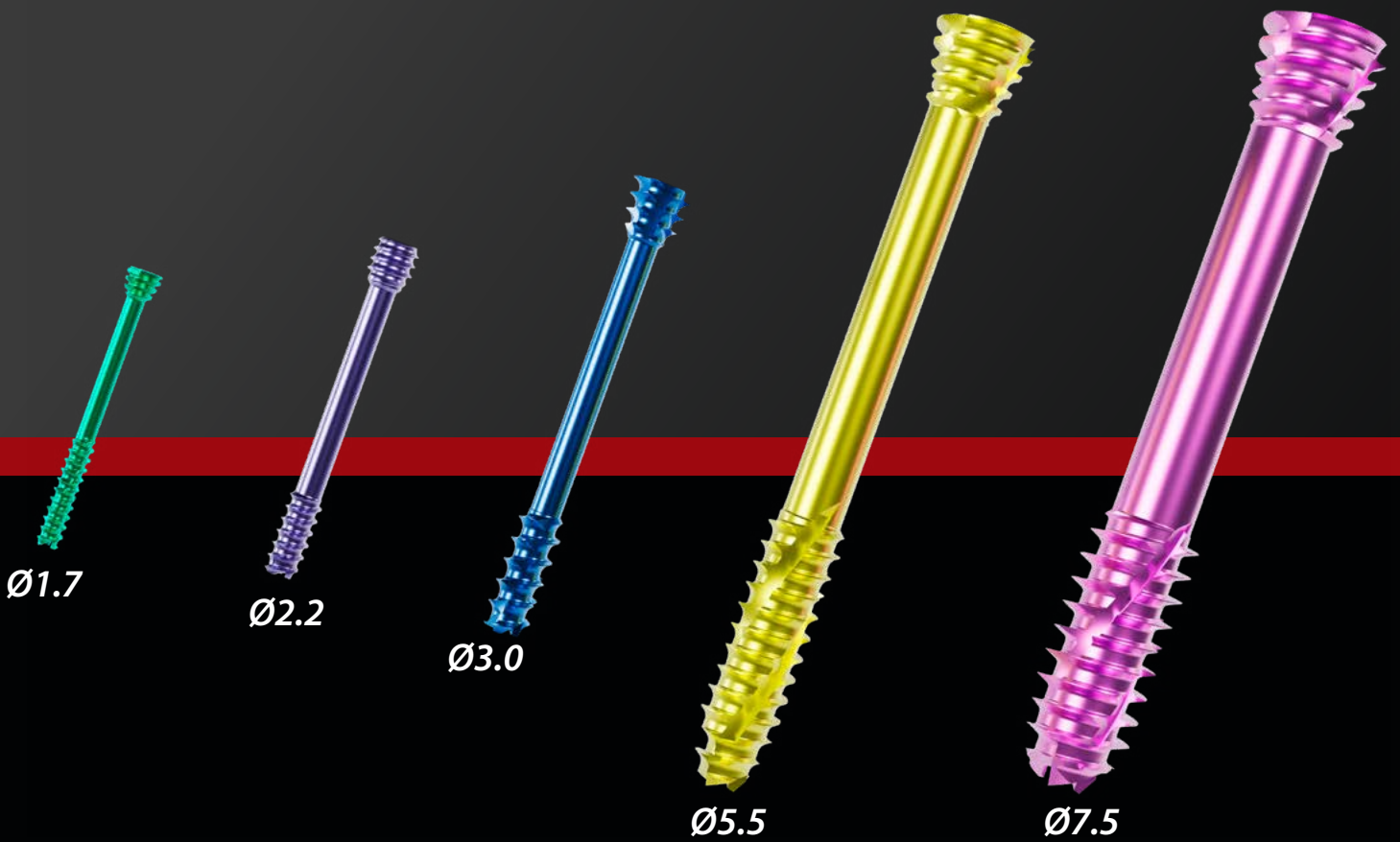


PDR SCREWS

CANNULATED HEADLESS COMPRESSION SCREWS

ENGLISH 



GMREIS

Qualidade para Vida

Calidad para Vida Quality for Life الجودة للحياة

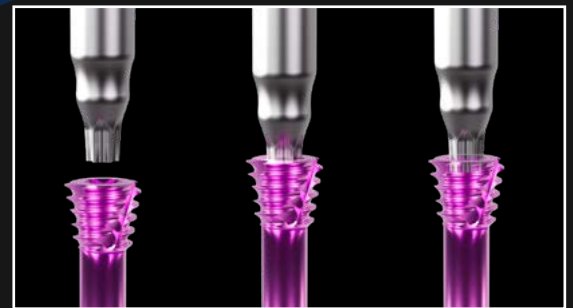
2024

PDR SCREWS

The PDR - Headless Cannulated Compression Screws were developed for fixation of: fractures, pseudarthrosis, osteotomies and arthrodesis; with percutaneous application and zero profile.



Torxdrive Connection



Torxdrive hexalobular connection provides better coupling and torque transmission between the screwdriver and screw, with self-retain.

Diameter options:
Ø1.7, 2.2, 3.0, 5.5 and 7.5 mm.

Self-tapping screw head facilitates the implantation with zero profile.



Self-tapping and self-drilling screw tip to reduce surgical time.

Self-tapping across all screw thread facilitates the implantation and screw remove.

Cannulated screws allow wire-guided application.

Titanium 6al4V ELI - ASTM F 136.

INDICATIONS FOR USE

● ● ● Ø1.7 mm | Ø2.2 mm | Ø3.0 mm
● ● Ø5.5 mm | Ø7.5 mm

Shoulder

● ●
Proximal humerus fractures.

Elbow

● ● ●
Elbow fractures: medial condyle, lateral condyle, distal humerus, radial head and olecranon.

Hand / Wrist

● ● ●
• Fractures: radial styloid, ulnar styloid, scaphoid, metacarpal heads, base of 1st metacarpal and phalanges; intramedullary fixation of metacarpals.
• Arthrodeses: of the carpal bones, carpometacarpal bones, proximal and distal interphalangeal bones.

Knee

● ●
Fractures of the femoral condyles, patella, and osteochondritis dissecans.
●
Patella fractures.

Foot and Ankle

● ●
• Fractures of: talus, calcaneus, and intramedullary fixation in metatarsal fractures (e.g. "Jones fracture").
• Osteotomy of the calcaneus; ankle, subtalar, triple and Charcot arthrodesis.
● ● ●
• Midfoot and forefoot bone fractures.
• Osteotomies to correct hallux valgus (e.g. chevron, akin, scarf and austin).
• Arthrodesis: tarsometatarsal, metatarsophalangeal, and interphalangeal joints.

Ø1.7 MM PDR SCREW



Ø1.7 MM PDR SCREW SELF - TAPPING / SELF-DRILLING

CODE	LENGTH	THREAD	QUANTITY
229-17-06	6.0 mm	3.0 mm	2
229-17-07	7.0 mm	3.0 mm	2
229-17-08	8.0 mm	3.0 mm	2
229-17-09	9.0 mm	4.0 mm	2
229-17-10	10.0 mm	4.0 mm	2
229-17-11	11.0 mm	5.0 mm	2
229-17-12	12.0 mm	5.0 mm	2
229-17-13	13.0 mm	5.0 mm	2
229-17-14	14.0 mm	6.0 mm	2
229-17-15	15.0 mm	6.0 mm	2
229-17-16	16.0 mm	7.0 mm	2
229-17-18	18.0 mm	7.0 mm	2
229-17-20	20.0 mm	8.0 mm	2



Ø1.7 MM PDR SCREW INSTRUMENTS SET

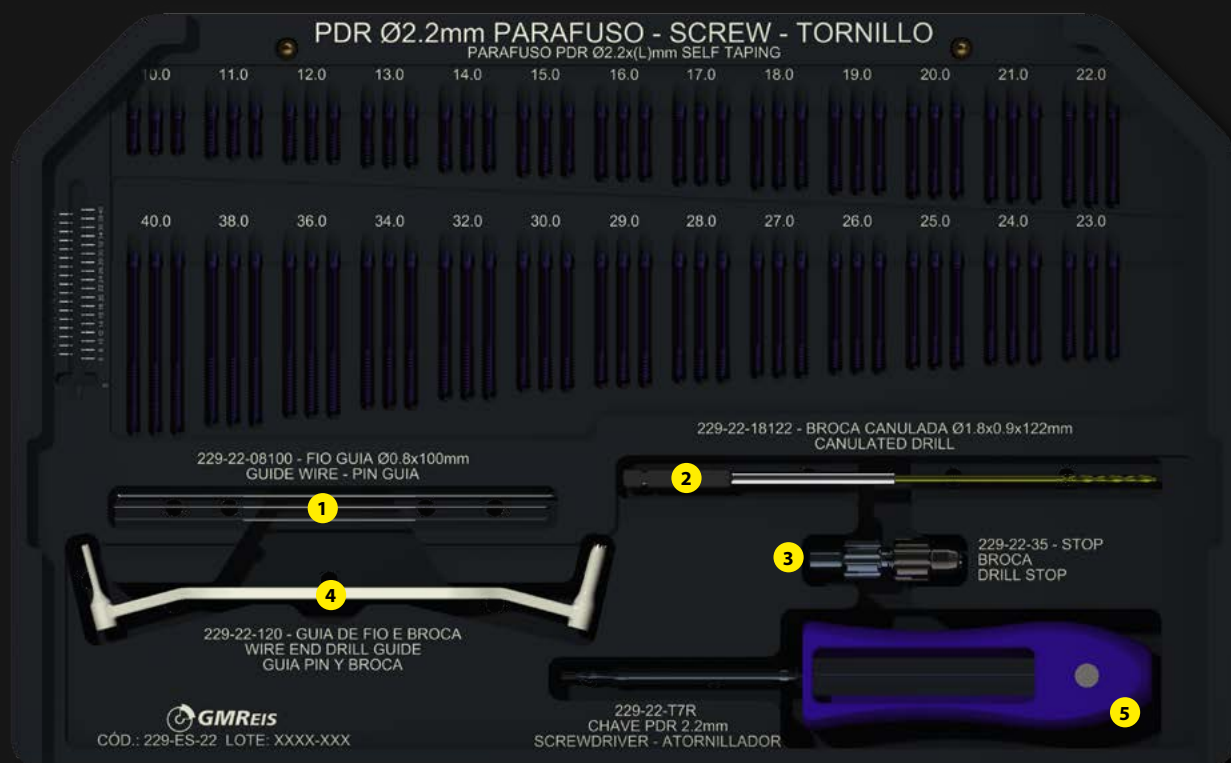
CODE	DESCRIPTION	QUANTITY
1 229-17-06100	Ø0.6 X 100.0 mm Guide Wire	3
2 229-17L-1367T	Ø1.3 x 0.7 x 122.0 mm Cannulated Drill	1
3 229-22-35	Drill Stop	1
4 229-17-T450	Ø0.8 - 1.5 mm Wire and Drill Guide	1
5 229-17-120	Screwdriver T4 with Gauge	1

Ø2.2 PDR SCREW

Ø2.2 PDR SCREW SELF-TAPPING / SELF-DRILLING



CODE	LENGTH	THREAD	QUANTITY
229-22-10	10.0 mm	4.0 mm	3
229-22-11	11.0 mm	5.0 mm	3
229-22-12	12.0 mm	5.0 mm	3
229-22-13	13.0 mm	5.0 mm	3
229-22-14	14.0 mm	5.0 mm	3
229-22-15	15.0 mm	5.0 mm	3
229-22-16	16.0 mm	5.0 mm	3
229-22-17	17.0 mm	5.0 mm	3
229-22-18	18.0 mm	5.0 mm	3
229-22-19	19.0 mm	5.0 mm	3
229-22-20	20.0 mm	5.0 mm	3
229-22-21	21.0 mm	5.0 mm	3
229-22-22	22.0 mm	5.0 mm	3
229-22-23	23.0 mm	5.0 mm	3
229-22-24	24.0 mm	6.0 mm	3
229-22-25	25.0 mm	6.0 mm	3
229-22-26	26.0 mm	6.0 mm	3
229-22-27	27.0 mm	6.0 mm	3
229-22-28	28.0 mm	6.0 mm	3
229-22-29	29.0 mm	6.0 mm	3
229-22-30	30.0 mm	6.0 mm	3
229-22-32	32.0 mm	11.0 mm	3
229-22-34	34.0 mm	12.0 mm	3
229-22-36	36.0 mm	13.0 mm	3
229-22-38	38.0 mm	14.0 mm	3
229-22-40	40.0 mm	15.0 mm	3



Ø2.2 MM PDR SCREW INSTRUMENTS SET

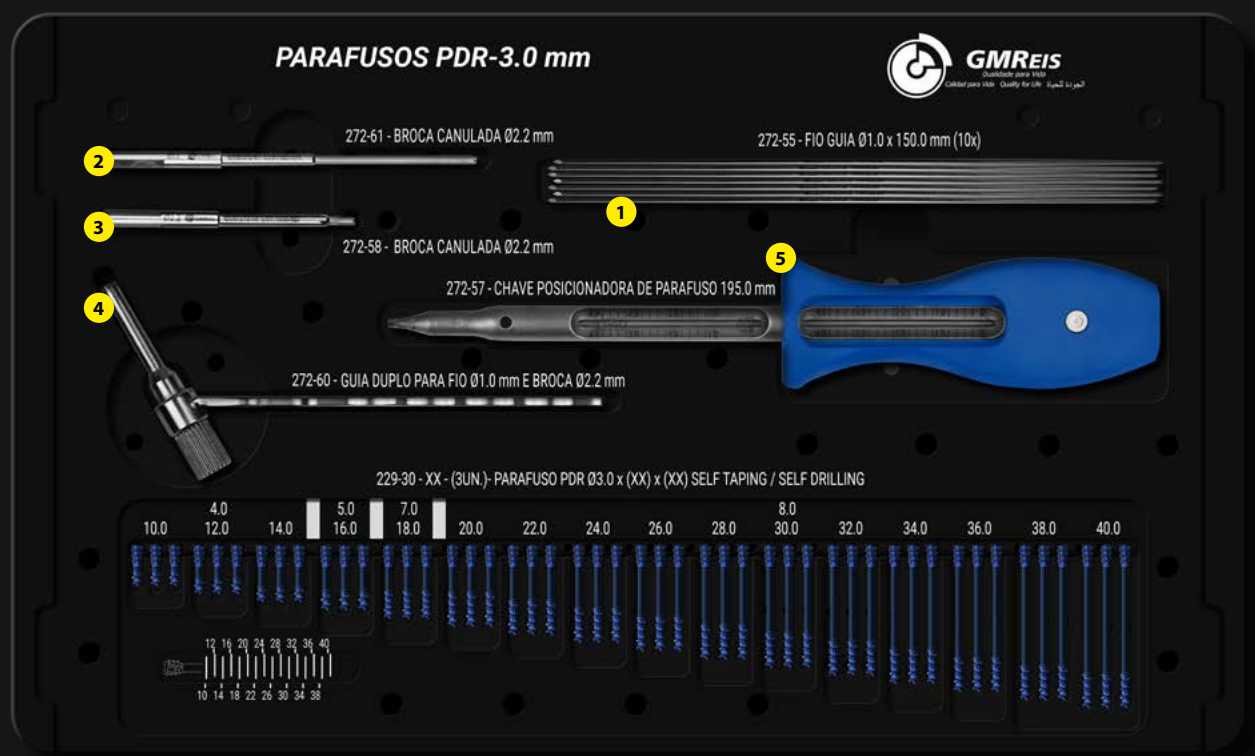
CODE	DESCRIPTION	QUANTITY
1 229-22-08100	Ø0.8 X 100.0 mm Guide Wire	3
2 229-22-18122T	Ø1.8 x 0.9 x 122.0 mm Cannulated Drill	1
3 229-22-35	Drill Stop	1
4 229-22-120	Ø0.9 - 2.0 mm Wire and Drill Guide	1
5 229-22-T7	Screwdriver T7 with Gauge	1

Ø3.0 MM PDR SCREW



Ø3.0 MM PDR SCREW SELF-TAPPING / SELF-DRILLING

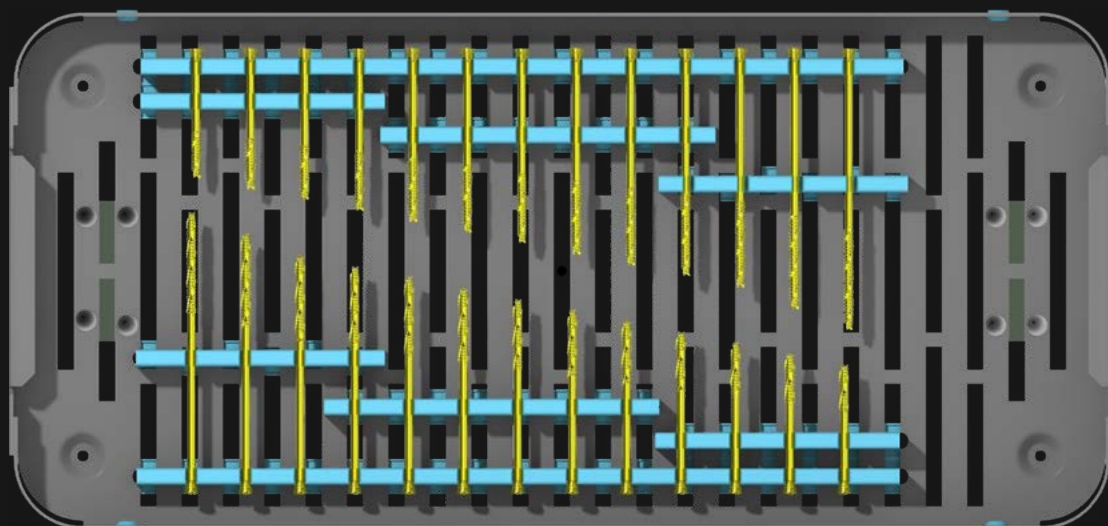
CODE	LENGTH	THREAD	QUANTITY
229-30-10	10.0 mm	4.0mm	3
229-30-12	12.0 mm	4.0mm	3
229-30-14	14.0 mm	4.0mm	3
229-30-16	16.0 mm	5.0mm	3
229-30-18	18.0 mm	7.0mm	3
229-30-20	20.0 mm	8.0mm	3
229-30-22	22.0 mm	8.0mm	3
229-30-24	24.0 mm	8.0mm	3
229-30-26	26.0 mm	8.0mm	3
229-30-28	28.0 mm	8.0mm	3
229-30-30	30.0 mm	8.0mm	3
229-30-32	32.0 mm	8.0mm	3
229-30-34	34.0 mm	8.0mm	3
229-30-36	36.0 mm	8.0mm	3
229-30-38	38.0 mm	8.0mm	3
229-30-40	40.0 mm	8.0mm	3



Ø3.0 MM PDR SCREW INSTRUMENTS SET

	CODE	DESCRIPTION	QUANTITY
1	272-55	Ø1.0 x 150.0 mm Guide Wire	10
2	272-61	Ø2.2 mm Cannulated Drill	1
3	272-58	Ø2.2 mm Countersink	1
4	272-60	Wire and Drill Guide	1
5	282-57	Screwdriver	1

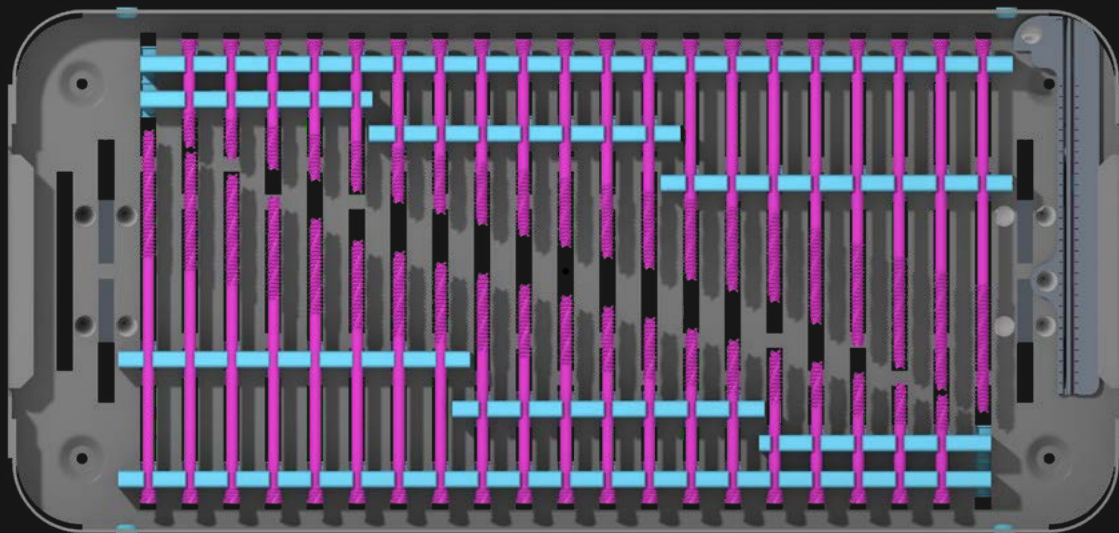
Ø5.5 MM PDR SCREWS



Ø5.5 MM PDR SCREWS SELF-TAPPING / SELF-DRILLING

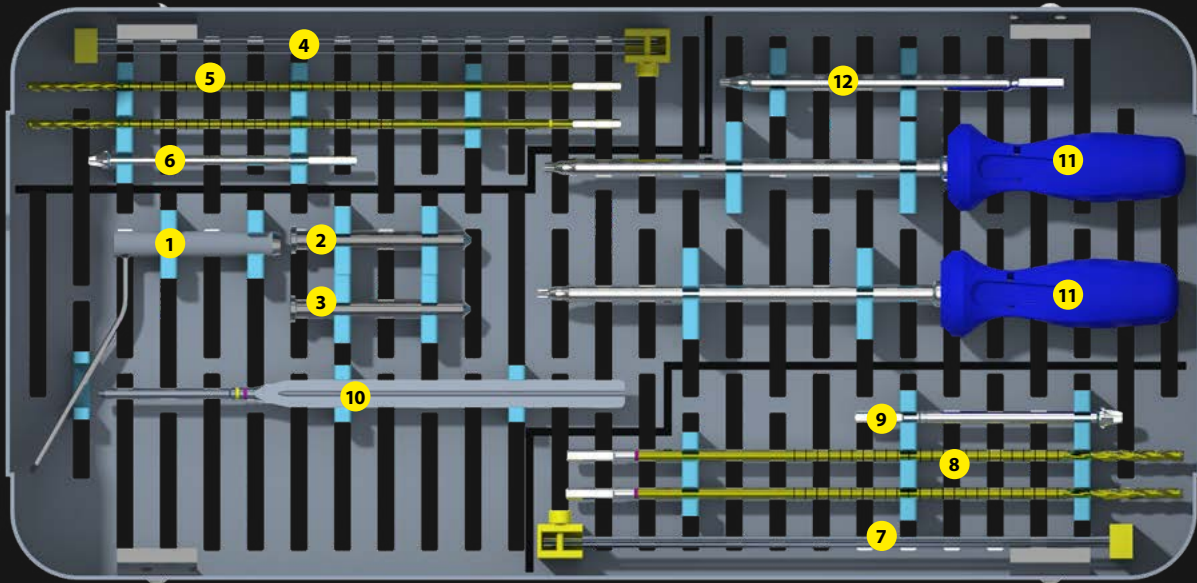
CODE	LENGTH	THREAD	QUANTITY
229-55-40	40.0 mm	14.5 mm	2
229-55-45	45.0 mm	16.0 mm	2
229-55-50	50.0 mm	18.0 mm	2
229-55-55	55.0 mm	20.0 mm	2
229-55-60	60.0 mm	21.5 mm	2
229-55-65	65.0 mm	23.5 mm	2
229-55-70	70.0 mm	25.0 mm	2
229-55-75	75.0 mm	27.0 mm	2
229-55-80	80.0 mm	29.5 mm	2
229-55-85	85.0 mm	30.5 mm	2
229-55-90	90.0 mm	32.5 mm	2
229-55-95	95.0 mm	34.0 mm	2
229-55-100	100.0 mm	36.0 mm	2
229-55-105	105.0 mm	38.0 mm	2
229-55-110	110.0 mm	39.5 mm	2
229-55-115	115.0 mm	41.5 mm	2
229-55-120	120.0 mm	43.0 mm	2
229-55-125	125.0 mm	45.0 mm	2
229-55-130	130.0 mm	47.0 mm	2

PDR Ø7.5 mm



Ø7.5 MM PDR SCREWS SELF-TAPPING / SELF-DRILLING

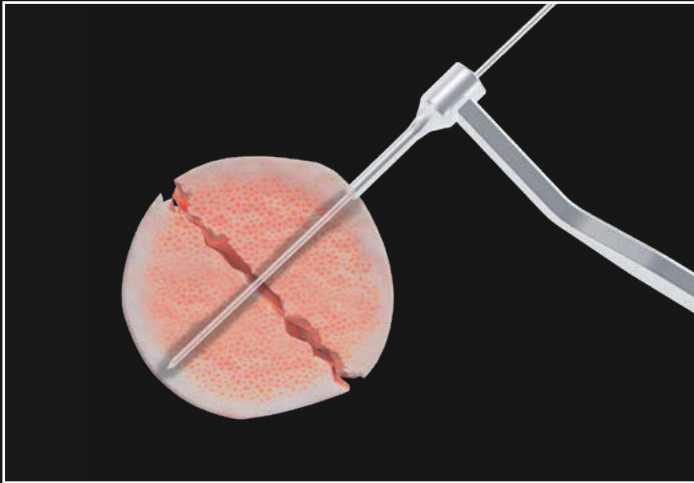
CODE	LENGTH	THREAD	QUANTITY
229-75-50	50.0 mm	17.0 mm	2
229-75-55	55.0 mm	19.0 mm	2
229-75-60	60.0 mm	20.5 mm	2
229-75-65	65.0 mm	22.0 mm	2
229-75-70	70.0 mm	24.0 mm	2
229-75-75	75.0 mm	25.5 mm	2
229-75-80	80.0 mm	27.0 mm	2
229-75-85	85.0 mm	29.0 mm	2
229-75-90	90.0 mm	30.5 mm	2
229-75-95	95.0 mm	32.0 mm	2
229-75-100	100.0 mm	34.0 mm	2
229-75-105	105.0 mm	36.0 mm	2
229-75-110	110.0 mm	37.5 mm	2
229-75-115	115.0 mm	39.0 mm	2
229-75-120	120.0 mm	41.0 mm	2
229-75-125	125.0 mm	42.5 mm	2
229-75-130	130.0 mm	44.0 mm	2
229-75-135	135.0 mm	46.0 mm	2
229-75-140	140.0 mm	47.5 mm	2
229-75-145	145.0 mm	49.5 mm	2
229-75-150	150.0 mm	51.0 mm	2
229-75-155	155.0 mm	53.0 mm	2
229-75-160	160.0 mm	54.5 mm	2
229-75-165	165.0 mm	56.0 mm	2
229-75-170	170.0 mm	58.0 mm	2



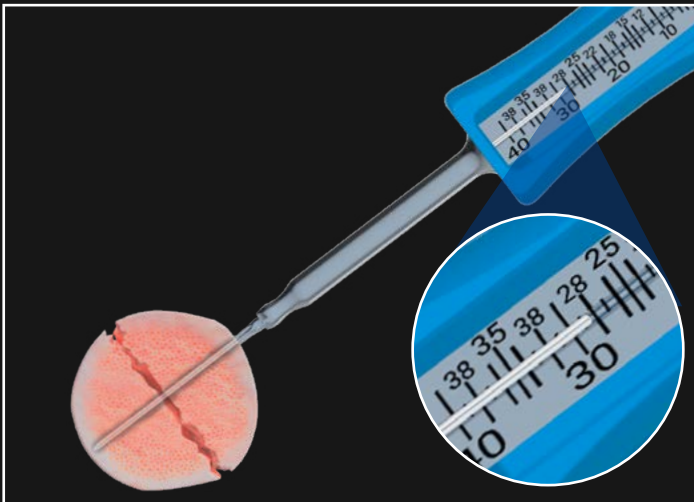
Ø5.5 / 7.5 MM PDR SCREWS INSTRUMENTS SET

	CODE	DESCRIPTION	QUANTITY
1	229-43-73	Ø5.5 / 7.5 mm Protection Cannula	1
2	229-43-76	Ø7.5 mm Wire Guide	1
3	229-43-77	Ø5.5 mm Wire Guide	1
4	229-55-16255	Ø1.6 x 255.0 mm Guide Wire	3
5	229-55-44260T	Ø4.4 x 1.7 x 260.0 mm Long Cannulated Drill	2
6	229-55-17177T	Ø5.5 mm PDR Countersink	1
7	229-75-22255	Ø2.2 x 255.0 mm Guide Wire	3
8	229-75-55270	Ø5.5 x 2.3 x 270.0 mm Cannulated Drill	2
9	229-75-23117T	Ø7.5 mm PDR Countersink	1
10	229-55-230	Depth Gauge	1
11	229-75C-T25	Cannulated Screwdriver T25	2
12	229-75-04T	Cannulated Screwdriver Shaft T25	1

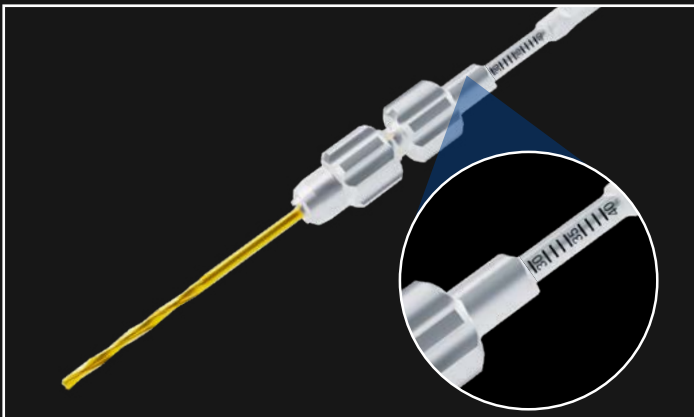
SURGICAL TECHNIQUE - PDR 1.7, 2.2 AND 3.0 mm



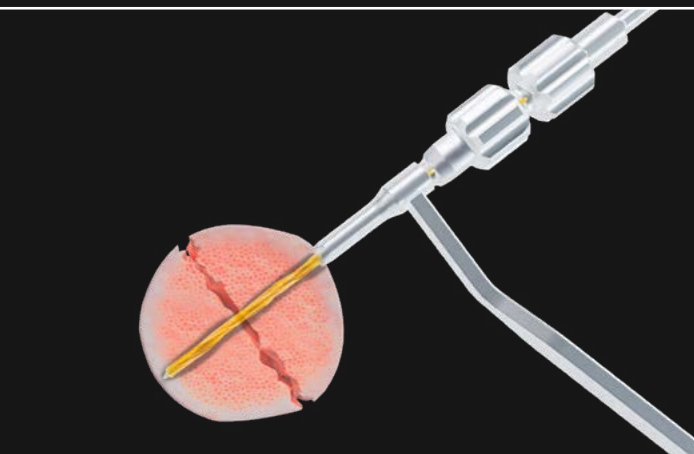
Apply a Guide Wire perpendicular to the fracture, using the Wire Guide. Check the Guide Wire positioning in fluoroscopy, considering its position will be a reference for screw measurement.



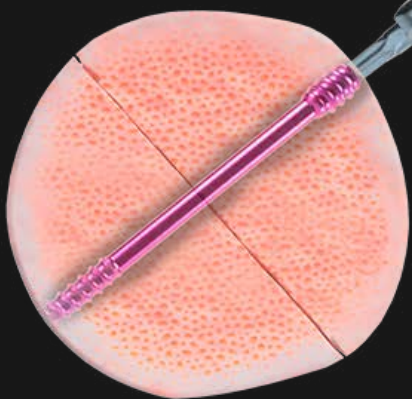
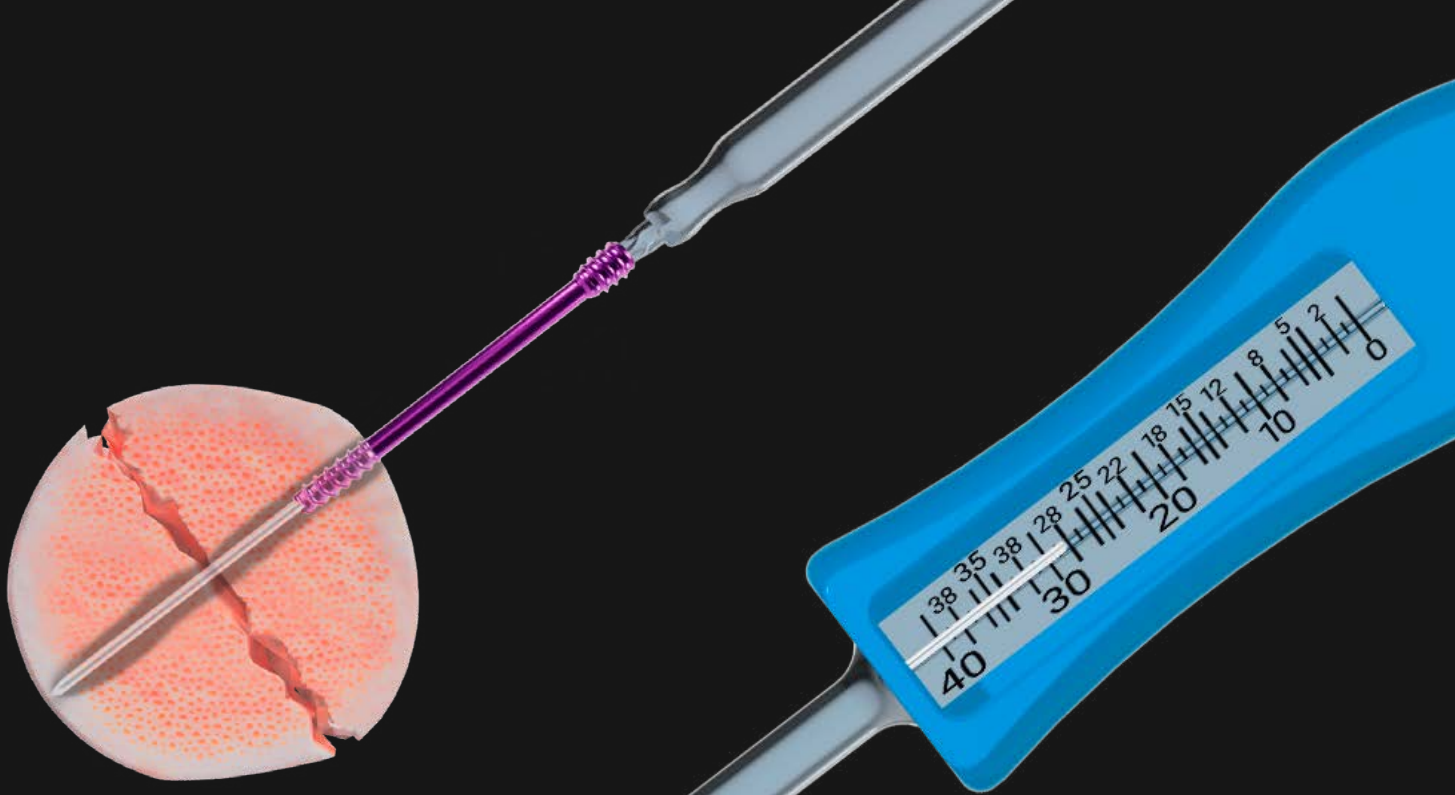
Remove the guide, and use the Guide Wire through the cannulated Screw Driver with Gauge to measure the screw length.



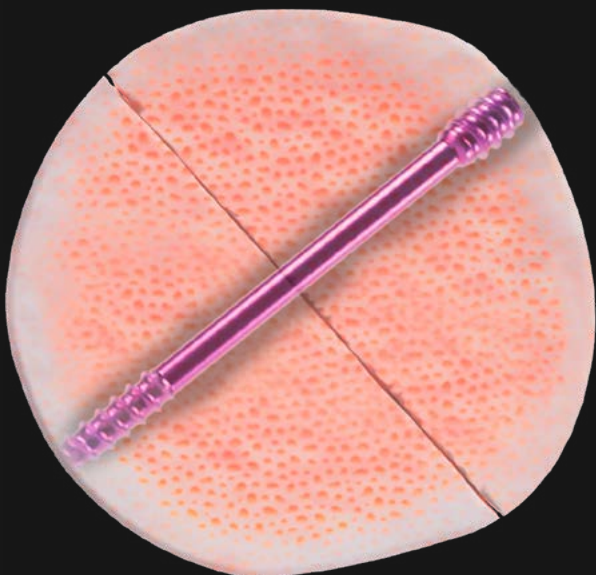
Couple the Drill Stop with the Drill using the depth reference of Drill laser mark, to provide correct drilling.



Perform the bone perforation with the Cannulated Drill through the Guide Wire, using a Drill Guide.



Using the Screwdriver, implant the PDR Screw through the Guide Wire, until performs the interfragmentary compression and it has zero profile fixation.



Check fragments and screw positioning in the fluoroscopy.

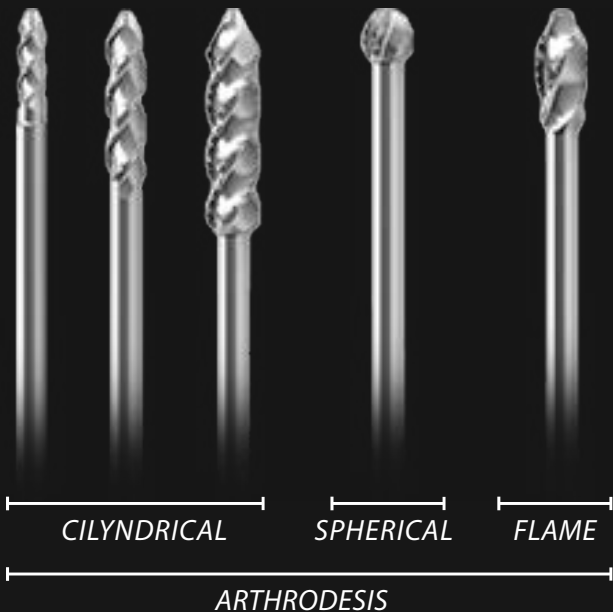
SURGICAL TECHNIQUE - PDR 5.5 AND 7.5 mm



Remove the articular cartilage with the GMReis MIS Arthrodesis Burrs to provide suitable conditions for bone fusion.

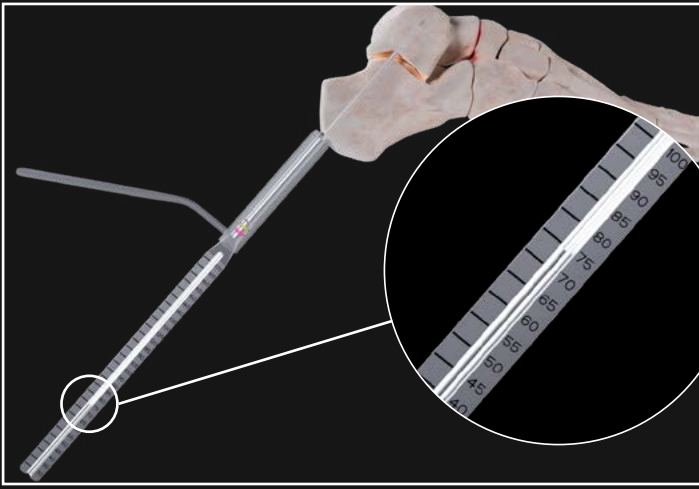


Position the PDR Protection Cannula coupled with the PDR Wire Guide and apply the Guide Wire to the screw implantation area.

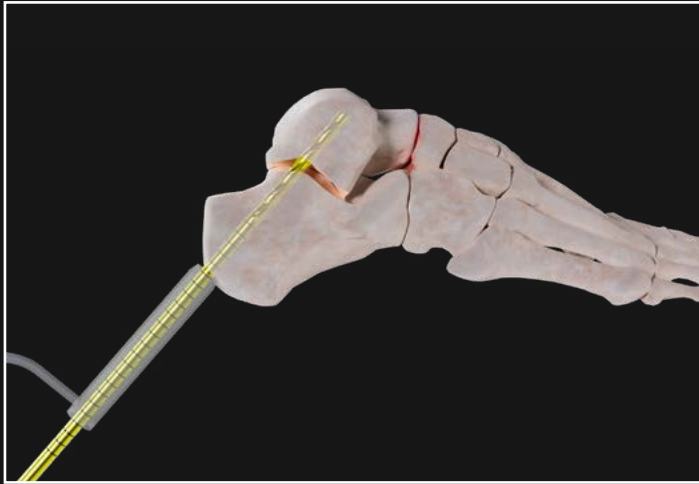


ARTHRODESIS MIS BURRS

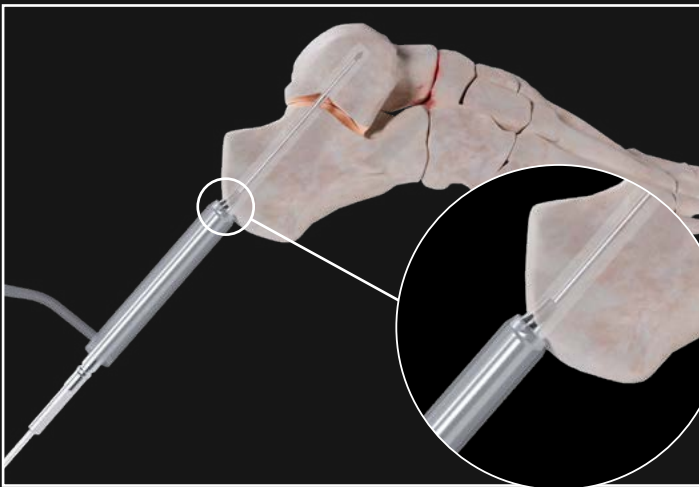
CODE	MODEL	Ø	LENGTH
317-30	Cylindrical arthrodesis	2.0 mm	8.0 mm
317-31	Cylindrical arthrodesis	3.0 mm	12.0 mm
317-32	Cylindrical arthrodesis	4.0 mm	16.0 mm
317-34	Spherical arthrodesis	4.0 mm	-
317-33	Flame arthrodesis	4.0 mm	8.0 mm



Use the Depth Gauge with the Guide Wire to determine the length of the PDR screw to be implanted.



Drill with the graduated Cannulated Drill Bit to the same depth as the screw to be implanted.



Apply the countersink up to its "stop" to prepare the space for the screw head.



Use the T25 Cannulated Screwdriver to apply the screw until it is fully implanted, with zero profile.



Repeat the steps for the application of a second screw, according to the surgical plan.





GMREIS

Qualidade para Vida

Calidad para Vida Quality for Life الجودة للحياة

HEADQUARTER | GMREIS

Pierre Simon de Laplace, 600 - Lote 3 Quadra F - Techno Park
ZIP CODE: 13069-320 | Campinas / SP - Brazil | Phone .: +55 (19) 3765 9900
marketingdigital@gmreis.com.br

 GMReisBrasil

www.gmreis.com.br