

BIOLOGICAL

BONE GRAFTS AND CEMENT

ENGLISH 



GMREIS

Qualidade para Vida

Calidad para Vida Quality for Life الجودة للحياة

2024

FAST BONE - INJECTABLE BONE GRAFT SUBSTITUTE WITH ASEPTIC MIXING SYSTEM

Bone graft substitute: synthetic, biocompatible, resorbable and osteoconductive, made with β -TCP and Calcium Sulphate, supplied with an application syringe with a device for totally aseptic mixing, providing quick preparation for filling bone cavities.



FAST BONE

CODE	DESCRIPTION
325-10	Fast Bone – Injectable Bone Graft Substitute 10 cc

New Osteo

Synthetic bone graft substitute in powder and granules, composed of medical grade calcium sulphate: non-toxic, biocompatible, biodegradable, radiopaque, osteoconductive and bioresorbable; with an option of adding antibiotic to act as delivery controlled element for infection-control.



Crystalline structure of calcium sulphate α - hemi – hydrate



NEW OSTEO

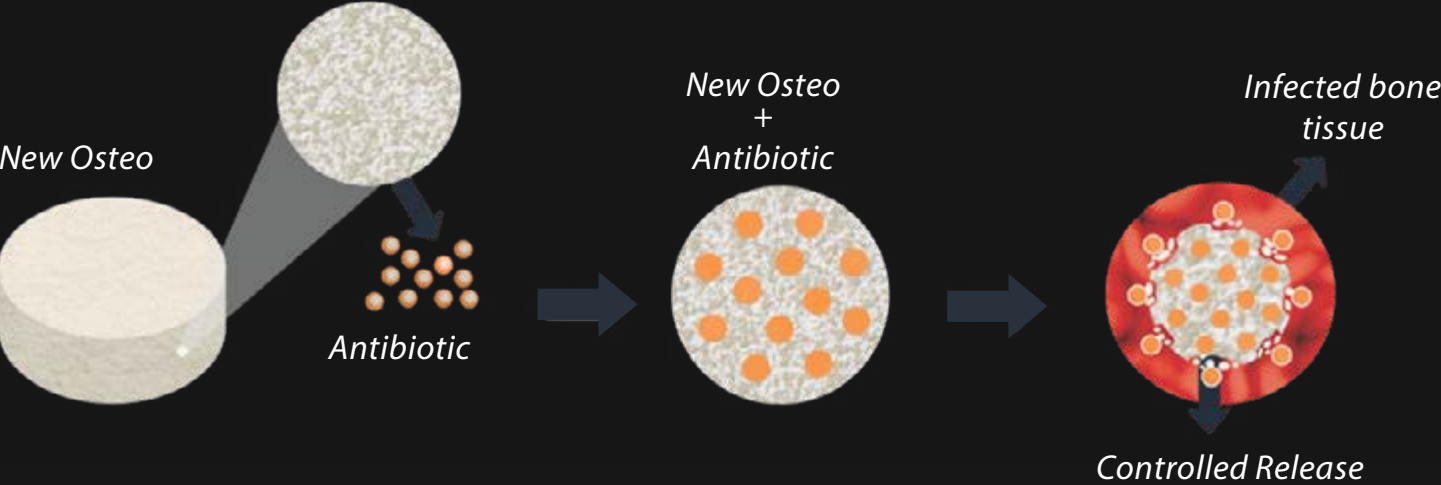
CODE	MODEL	VOLUME
149-01-05	Powder	5 cc
149-01-10	Powder	10 cc
149-05-05	Granules	5 cc
149-05-10	Granules	10 cc
149-05-20	Granules	20 cc



Powder

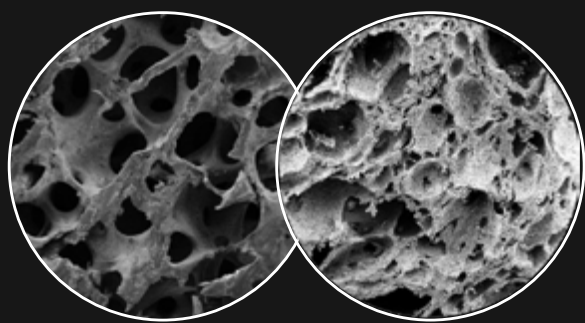
Granules

INFECTION CONTROL SCHEMATICS



Sponjosa

Sponjosa, bone void filler, mimetizes both the chemical composition and the physical structure of natural cancellous bone, presenting a trabecular structure with interconnected channels, consisting of different pore sizes (from 1µm to 1000µm) that occur simultaneously, oriented in multiple directions.



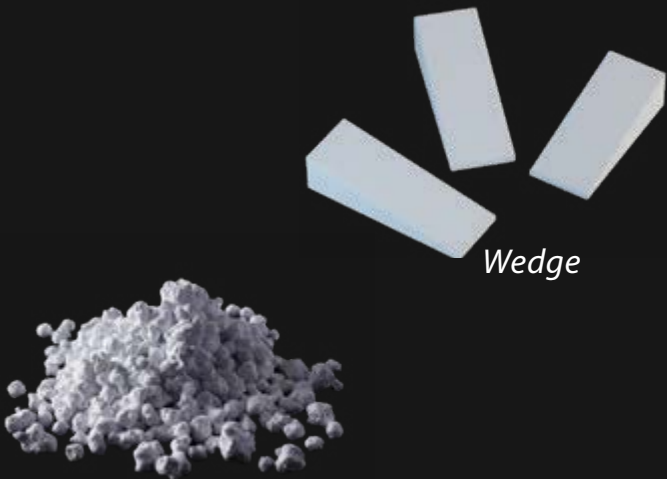
Cancellous bone structure

Sponjosa structure



SPONJOSA - SYNTHETIC CANCELLOUS BONE β-TRICALCIUM PHOSPHATE (β-TCP)

CODE	MODEL	VOLUME
167-01	Granules	10 cc
167-24	Wedge	7 mm
167-27	Wedge	10 mm
167-29	Wedge	12 mm

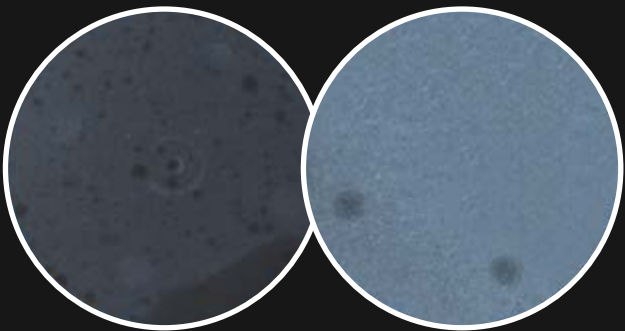


Granules

Wedge

Cimentech

Bone cement radiopac, polymerizable, non-resorbable, easy to handle and prepare, with low initial viscosity and high intrusion; indicated for: vertebroplasty, kyphoplasty and pedicle screw augmentation. Product components are: liquid methyl methacrylate (MMA), solid polymethylmethacrylate (PMMA) and 20% of barium sulfate (BaSO₄) for radiopacity.



RADIOCAPACITY

Others Bone Cement
10%
Barium Sulfate

Barium sulfate
Cimentech
20%



PEDICLE SCREW AUGMENTATION

*Combined use of Cimentech with Pedimax II
Porous GMReis to increase the strength of pedicle
fixation in osteoporotic vertebra.*



CIMENTECH – RADIOPAQUE ORTHOPEDIC CEMENT

CODE
250-01



HEADQUARTER | GMREIS

Pierre Simon de Laplace, 600 - Lote 3 Quadra F - Techno Park
ZIP CODE: 13069-320 | Campinas / SP - Brazil | Phone .: +55 (19) 3765 9900
marketingdigital@gmreis.com.br

   GMReisBrasil

www.gmreis.com.br